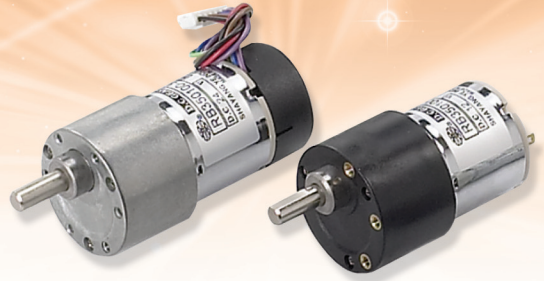


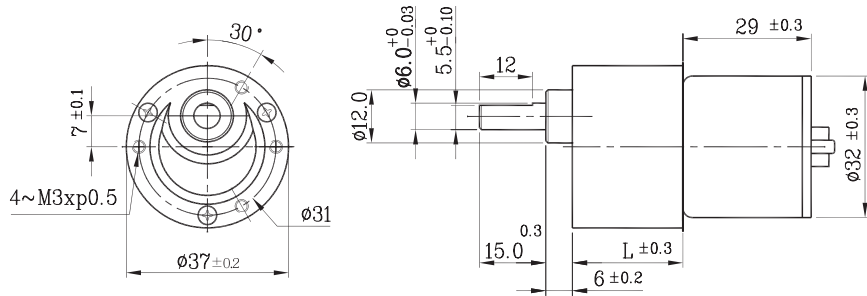
# JC-37SGM 11&12 TYPE

엔코더 장착 가능 51Page 참고

- 사용 습도(Operating relative humidity) : 20% ~ 85%
- 사용 온도(Operating temperature) : -10°C ~ +60°C



## 제품도면 (Dimension)



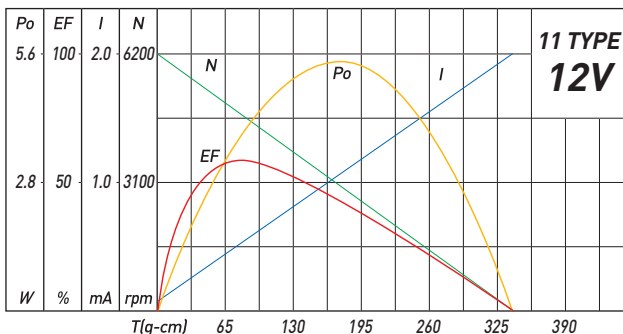
## 감속모터 사양 (Geared Motor Specification)

감속기 길이 (mm) Gear Head L		22		24.5				27					29.5				32			
감속비 Reduction ratio		1/18	1/30	1/50	1/60	1/75	1/90	1/100	1/120	1/150	1/180	1/200	1/250	1/300	1/500	1/600	1/750	1/1000	1/1500	1/3000
11 Type 12v	정격토크(kg-cm) Rated torque	0.8	1.2	2.0	2.0	2.9	3.0	3.0	4.0	4.0	4.0	4.0	4.0	4.0	4.0	4.0	4.0	4.0	4.0	4.0
	정격 회전수(RPM) Rated speed	270	172	100	85	67	57.5	52	43	36	31	29	23	20.5	12	10	8	6.2	4.1	2.1
12 Type 24v	정격토크(kg-cm) Rated torque	0.8	1.2	2.0	2.0	3.0	3.0	3.0	4.0	4.0	4.0	4.0	4.0	4.0	4.0	4.0	4.0	4.0	4.0	4.0
	정격 회전수(RPM) Rated speed	278	170	98	84	65	57	51	42	35	31	29	23	20	12	10	8	6.2	4.1	2.1

## 모터부 사양 (Install motor specification)

### 11Type Motor (DC 12v)

• 정격 토크 Rated torque	60	(gf-cm)
• 정격 회전수 Rated speed	5,100	(RPM)
• 정격 전류 Rated current	470	(mA)
• 무부하 회전수 No load speed	6,200	(RPM)
• 무부하 전류 No load current	120	(mA)
• 정격 출력 Rated output	3,14	(W)



### 12Type Motor (DC 24v)

• 정격 토크 Rated torque	62	(gf-cm)
• 정격 회전수 Rated speed	5,000	(RPM)
• 정격 전류 Rated current	210	(mA)
• 무부하 회전수 No load speed	6,200	(RPM)
• 무부하 전류 No load current	60	(mA)
• 정격 출력 Rated output	3,17	(W)

